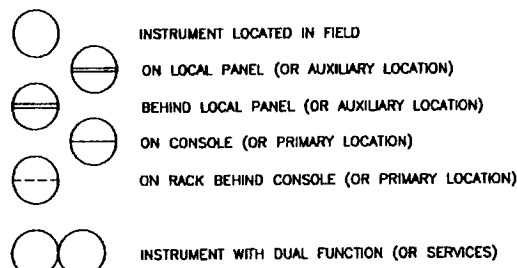
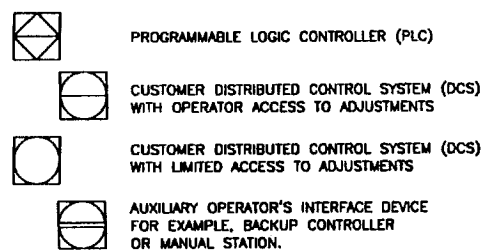


GENERAL INSTRUMENT SYMBOLS

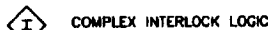


LOGIC CONTROLLER SYMBOLS



WHEN INSTRUMENTS ARE DESIGNATED WITH AN ALARM

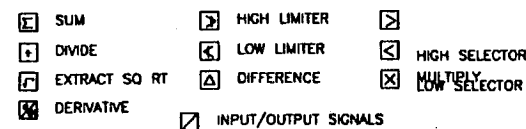
H INDICATES HIGH
L INDICATES LOW
HH HIGH SHUTDOWN
LL LOW SHUTDOWN



FUNCTION IDENTIFICATION

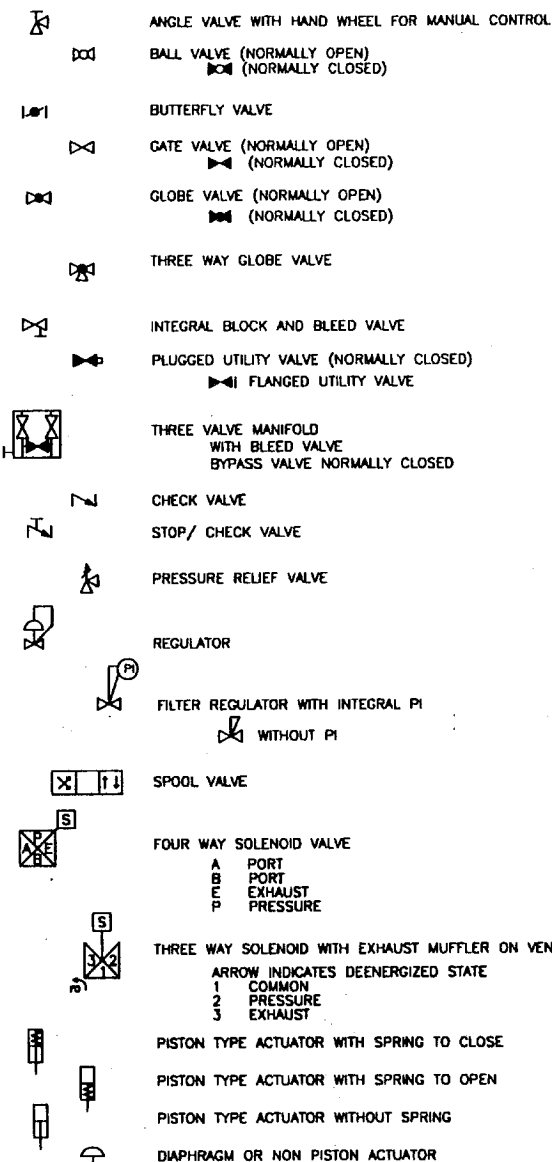


FUNCTION SYMBOLS



DESIGNATION	SIGNAL
A	ANALOG
D	DISCRETE
E	VOLTAGE (EMF)
I	CURRENT
N	HYDRAULIC
O	ELECTROMAGNETIC
P	PNEUMATIC
R	RESISTANCE

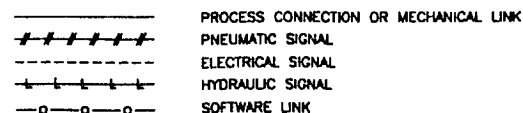
VALVE DESIGNATIONS



LETTERS AT INDIVIDUAL VALVES

C COMMON PORT
CSC CAR SEAL CLOSED
CSO CAR SEAL OPEN
FC CLOSES ON LOSS OF AIR OR POWER
FO OPENS ON LOSS OF AIR OR POWER
O/U OVER PLUG/UNDER PLUG (GLOBE VALVES)
TSO TIGHT SHUTOFF
SS SHAFT SIDE (BUTTERFLY VALVES)

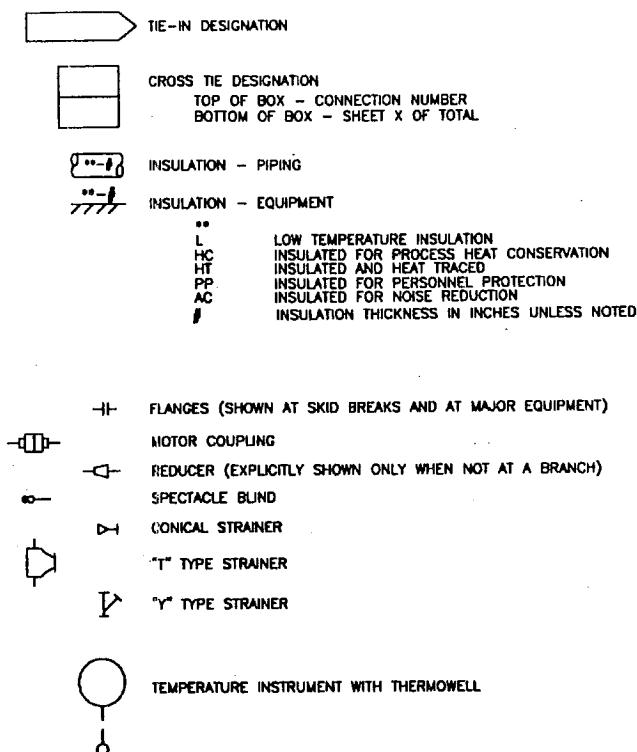
INSTRUMENT LINE SYMBOLS



PROCESS AND UTILITY PIPE CLASS INDEX

C150 HYDROCARBONS, 150# CARBON STEEL
C300 HYDROCARBONS, 300# CARBON STEEL
H150 HYDROGEN AND HYDROCARBONS, 150# CARBON STEEL
H300 HYDROGEN AND HYDROCARBONS, 300# CARBON STEEL
H800 HYDROGEN AND HYDROCARBONS, 800# CARBON STEEL
H150L LOW TEMPERATURE HYDROGEN AND HYDROCARBONS, 150# CARBON STEEL
H300L LOW TEMPERATURE HYDROGEN AND HYDROCARBONS, 300# CARBON STEEL
H800L LOW TEMPERATURE HYDROGEN AND HYDROCARBONS, 800# CARBON STEEL
IA150 INSTRUMENT AIR OR LUBE OIL, 150# STAINLESS STEEL

MISCELLANEOUS PIPING SYMBOLS



MODIFIED ISA-S5.1 TABLE 1*

FUNCTIONAL IDENTIFICATION OF INSTRUMENTS

	FIRST LETTER		SUBSEQUENT LETTERS	
	MEASURED VARIABLE	MODIFIER	READOUT	OUTPUT
A	ANALYSIS		ALARM	
B	BURNER FLAME			
C				CONTROL
D		DIFFERENTIAL		
E	VOLTAGE		PRIMARY ELEMENT	
F	FLOW	RATIO (FRACTION)		
G			GLASS GAUGE	
H	HAND (MANUAL)			
I	CURRENT		INDICATE	
J	POWER	SCAN		
K	TIME	RATE OF CHANGE*		CONTROL STATION
L	LEVEL		LIGHT	
M		MOMENTARY		
N				
O			ORIFICE*	
P	PRESSURE, VACUUM		POINT (TEST CONN)	
Q	QUANTITY	INTEGRATE, TOTALIZE		
R			RECORD	
S	SPEED, FREQUENCY	SAFETY		SWITCH
T	TEMPERATURE			TRANSMITTER
U	MULTIVARIABLE			
V	VIBRATION			VALVE*
W	WEIGHT		WELL	
X	UNCLASSIFIED	SKIN*		
Y				RELAY, COMPUTE, CONVERT
Z	POSITION			

* DIFFERENCES BETWEEN THIS TABLE AND TABLE 1 OF ISA-S5.1 ARE INDICATED BY AN ASTERISK EXCEPT THAT THE ISA MODIFIER COLUMN AND ALL "USERS CHOICE" ARE NOT SHOWN AND "UNCLASSIFIED" IS GIVEN ONLY FOR X.

MISCELLANEOUS DESIGNATIONS

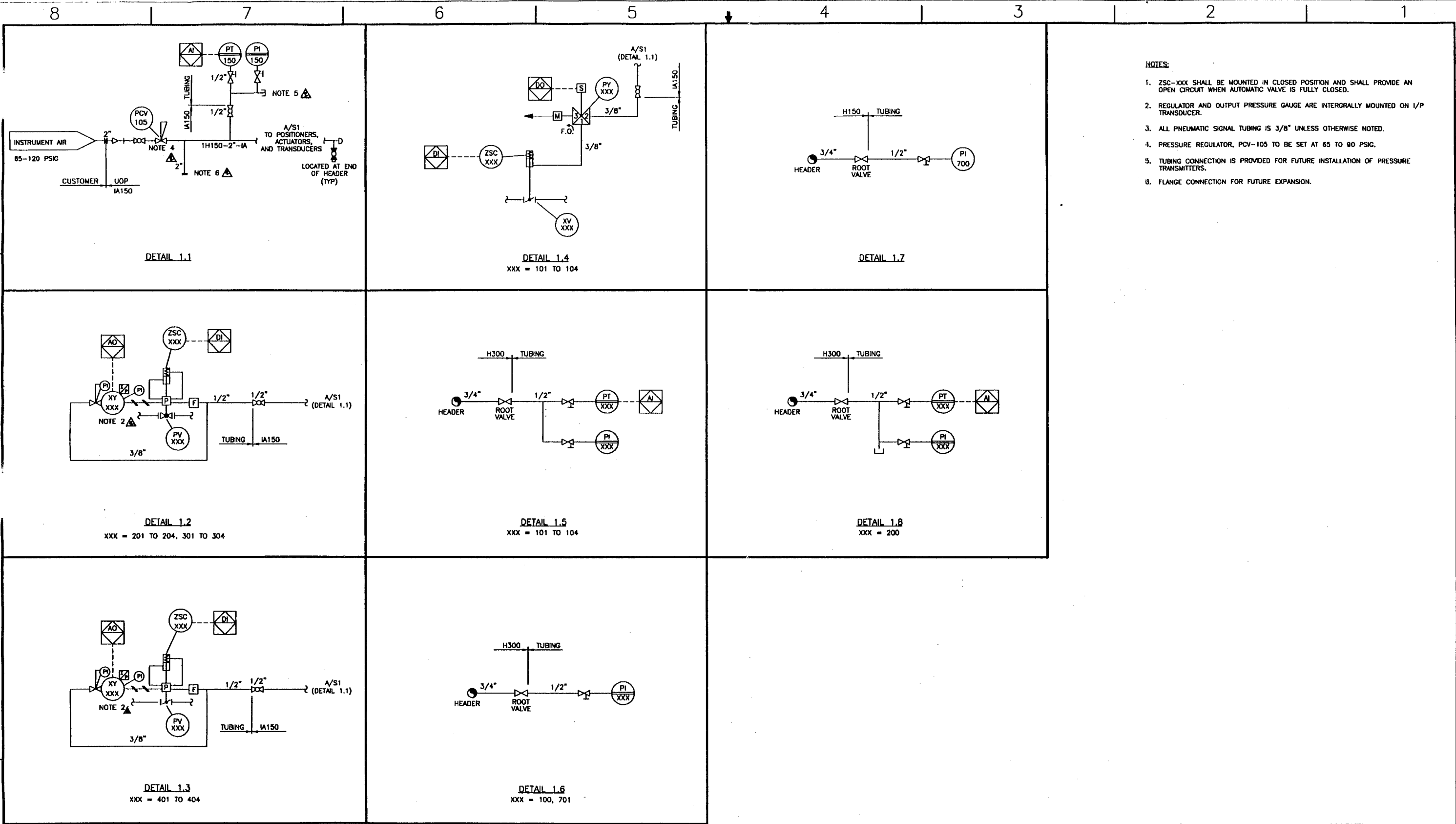
AI ANALOG INPUT (TO CONTROLLER)
AO ANALOG OUTPUT (FROM CONTROLLER)
DI DISCRETE INPUT (TO CONTROLLER)
DO DISCRETE OUTPUT (FROM CONTROLLER)
FPC FIELD PIPING CONNECTION (UOP SCOPE OF SUPPLY)
INS INSULATE
MCC MOTOR CONTROL CENTER
PCV REGULATOR
PSV PRESSURE RELIEF VALVE
PSE RUPTURE DISK ASSEMBLY

RO RESTRICTION ORIFICE
XCV STEAM TRAP-ALL TRAPS OTHER THAN BALL FLOAT TYPE
ZSO LIMIT SWITCH ON FULL OPEN
ZSC LIMIT SWITCH ON FULL CLOSED

GENERAL NOTES

- ALL TAPS POINT DOWN UNLESS OTHERWISE NOTED. INSTRUMENT TAPS, ROOT VALVES, VENTS AND DRAINS ARE 3/4" UNLESS NOTED OTHERWISE.
- INSULATION COLLAR SIGNIFIES INSULATION UP TO FLANGE.
- ALL AUTOMATIC GLOBE VALVES ARE FLANGED.
- ALL THERMOWELLS ARE FLANGED.

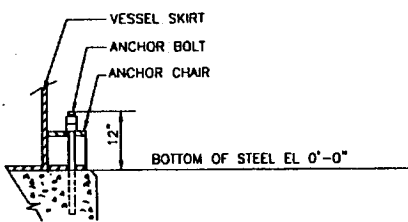
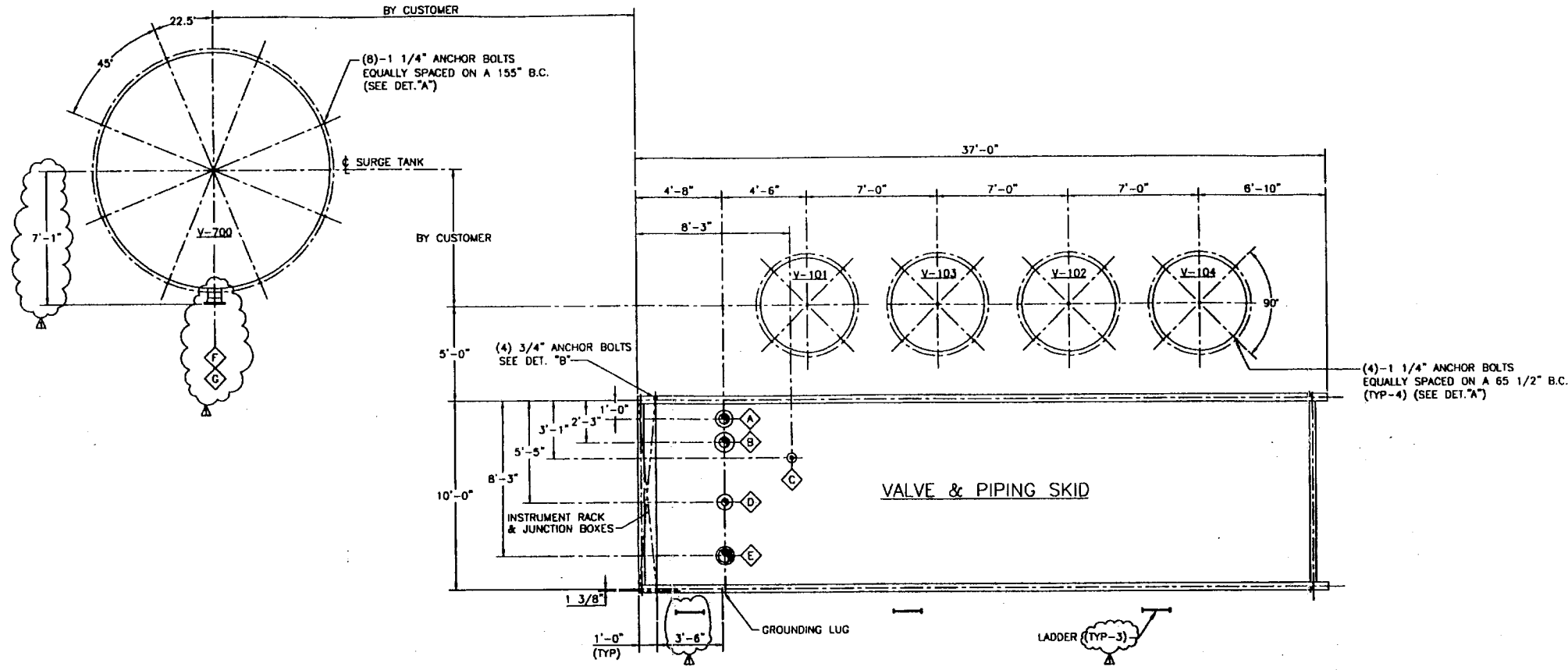
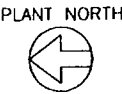
2	AS BUILT	HOQ	JCSM	JEC	AZ	11/14/98
1	ST PSV, GENERAL REVISION	HOQ	JCSM	JEC	AZ	11/14/98
0	PRELIMINARY	HOQ	JCSM	WCM	NAJM	10/9/98
REV.	DESCRIPTION	DRAWN	ENG.	CHK'D	APPD.	DATE
CONFIDENTIAL						
THIS INFORMATION IS PROPRIETARY AND SHALL NOT BE DISCLOSED OUTSIDE YOUR ORGANIZATION. IT IS NOT TO BE REPRODUCED, COPIED, OR DISCLOSED FOR ANY PURPOSE OTHER THAN AS PERMITTED UNDER WRITTEN AGREEMENT WITH UOP.						
DRAWING TITLE: PIPING AND INSTRUMENTATION DIAGRAM LEGEND AND GENERAL NOTES POLYBED® PSA UNIT PRAXAIR FORT SASKATCHEWAN, ALBERTA, CANADA						
PROJECT #:		1068		SHEET NO.: 2		
P.O. #:		6898083		REV:		
EQUIPMENT:		NONE		UOP DRAWING NUMBER: 1365-D-102		
TAG:		1365B001		1 OF 3		



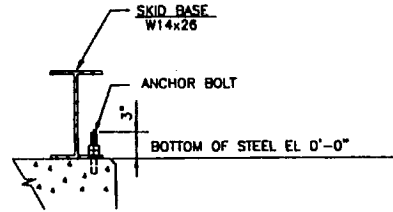
- NOTES:
- 1. ZSC-XXX SHALL BE MOUNTED IN CLOSED POSITION AND SHALL PROVIDE AN OPEN CIRCUIT WHEN AUTOMATIC VALVE IS FULLY CLOSED.
 - 2. REGULATOR AND OUTPUT PRESSURE GAUGE ARE INTERGRALLY MOUNTED ON I/P TRANSDUCER.
 - 3. ALL PNEUMATIC SIGNAL TUBING IS 3/8" UNLESS OTHERWISE NOTED.
 - 4. PRESSURE REGULATOR, PCV-105 TO BE SET AT 65 TO 90 PSIG.
 - 5. TUBING CONNECTION IS PROVIDED FOR FUTURE INSTALLATION OF PRESSURE TRANSMITTERS.
 - 6. FLANGE CONNECTION FOR FUTURE EXPANSION.

PRAXAIR
PROJECT #: 1088
P.O. #: 6896063
EQUIPMENT:
TAG

2	AS BUILT	HOQ	PCSM	WCM	MM	18/97
1	ST PSV, GENERAL REVISION	HOQ	JCSM	JEC	AZ	11/14/98
0	PRELIMINARY	HOQ	JCSM	WCM	MJM	10/9/98
REV.	DESCRIPTION	DRAWN	ENL.	CHG'D.	APPR'D.	DATE
CONFIDENTIAL						
THIS INFORMATION IS PROPRIETARY AND SHALL NOT BE DISCLOSED OUTSIDE YOUR ORGANIZATION. IF YOU ARE AN EMPLOYEE OF A COMPANY THAT HAS BEEN DISCLOSED FOR ANY PURPOSE OTHER THAN AS PERMITTED UNDER WRITTEN AGREEMENT WITH UOP.						
DRAWING TITLE: PIPING AND INSTRUMENTATION DIAGRAM PSA DETAILS POLYBED® PSA UNIT PRAXAIR FORT SASKATCHEWAN, ALBERTA, CANADA						
SCALE:	NONE	OLD FILE:	1365B003	UOP DRAWING NUMBER:	1365-D-102	SHEET NO.: 3 OF 3



DETAIL "A"
ADSORBER & SURGE TANK ANCHOR BOLTS
(N.T.S.)



DETAIL "B"
PSA SKID ANCHOR BOLTS
(N.T.S.)

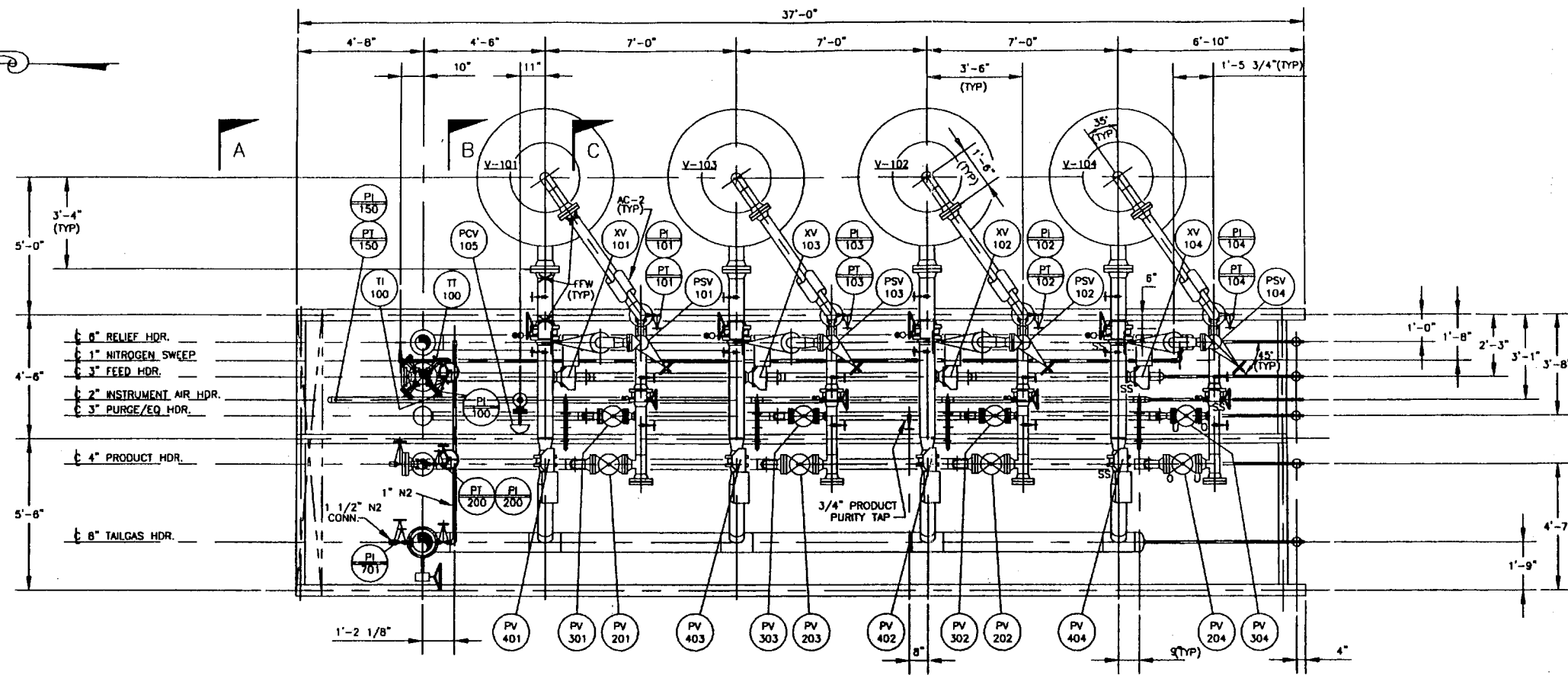
NOZZLE SCHEDULE (CUSTOMER CONNECTIONS)					
NOZZ.	SIZE	RATING	FACE	SERVICE	ELEVATION
A	6"	150 #	R.F.	RELIEF OUTLET	F.O.F. EL 5'-6"
B	6"	300 #	R.F.	FEED INLET	F.O.F. EL 8'-4"
C	2"	150 #	R.F.	INSTRUMENT AIR INLET	F.O.F. EL 5'-6"
D	4"	300 #	R.F.	PRODUCT OUTLET	F.O.F. EL 5'-6"
E	8"	300 #	R.F.	TAILGAS OUTLET	F.O.F. EL 5'-6"
F	8"	150 #	R.F.	SURGE TANK INLET	EL 14'-0"
G	8"	150 #	R.F.	SURGE TANK OUTLET	EL 10'-0"

ESTIMATED WEIGHTS IN POUNDS			
ITEM	SHIPPING	OPERATING	HYDROTEST
PSA SKID	21,000	21,000	N/A
ADSORBER VESSEL (EA.)	19,500	34,500	44,500
SURGE TANK	62,500	62,500	466,000

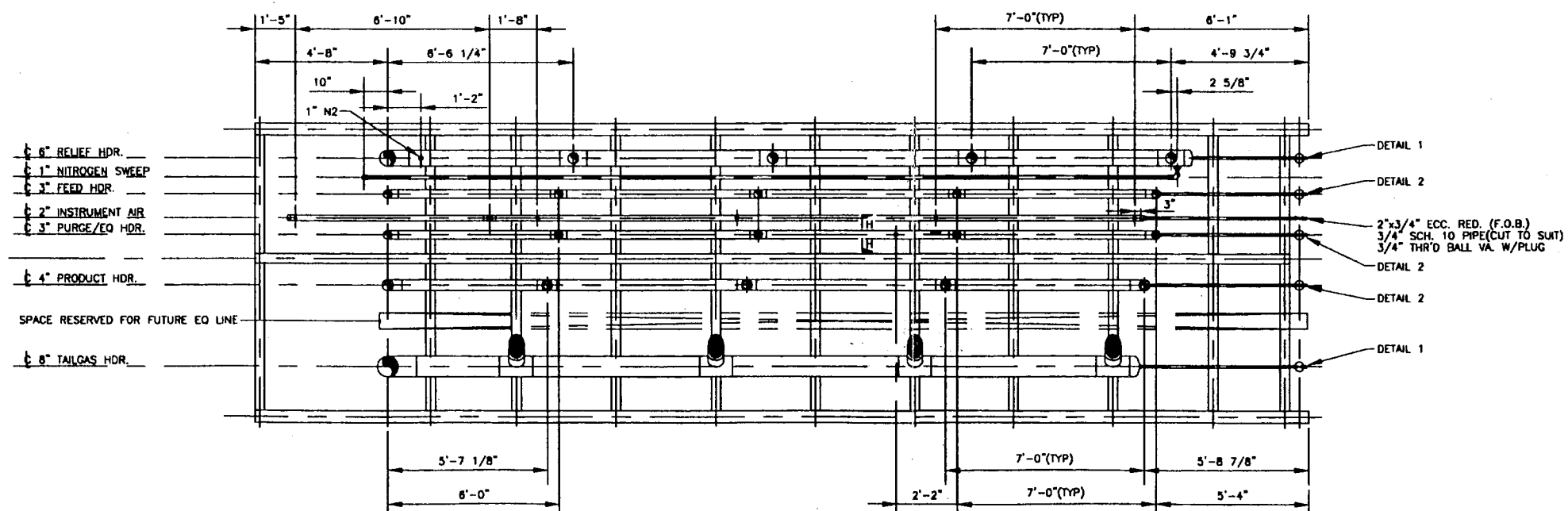
- NOTES:
- EQUIPMENT TO BE GROUNDED BY CUSTOMER.
 - DO NOT FIELD HYDROTEST SKID.
 - ALL ELEVATIONS GIVEN IN NOZZLE SCHEDULE ARE FROM BOTTOM OF STEEL EL 0'-0"
 - PSA SKID SHALL BE SUPPORTED ON A CONTINUOUS SLAB TYPE FOUNDATION OR PIERS NOT EXCEEDING 10'-0" SPACING.
 - F.O.F. DENOTES FACE OF FLANGE.

ISSUED FOR
CONSTRUCTION

1	ISSUED FOR CONSTRUCTION	JDC	DMM	CPC	NLF	1/10/97
0	PRELIMINARY ISSUE	JDC	DMM		MW	10/23/96
REV.	DESCRIPTION	DRAWN	ENL.	CHK'D.	APP'D.	DATE
<div><div>CONFIDENTIAL</div><div>THIS INFORMATION IS PROPRIETARY AND SHALL NOT BE DISCLOSED OUTSIDE YOUR ORGANIZATION, NOR SHALL IT BE DUPLICATED, USED, OR DISCLOSED FOR ANY PURPOSE OTHER THAN AS FORWARDED UNDER WRITTEN AGREEMENT WITH UOP.</div><div><div>uop</div><div>2500 EAST ALBERTA STREET - PO BOX 1017 - BOX PLAINS, L1N0B1 0B017-0017-0001</div></div></div>						
DRAWING TITLE:						
EQUIPMENT ARRANGEMENT - NLF POLYBED® PSA UNIT PRAXAIR FORT SASKATCHEWAN, ALBERTA, CANADA						
33						
SCALE:	CAD FILE:	UOP DRAWING NUMBER:			SHEET NO.:	
1/4"=1'-0"	1365G001	1365-D-121			1 OF 1	
					REV.:	1



PIPING PLAN




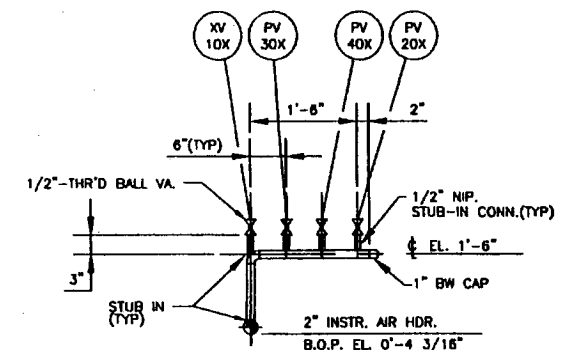
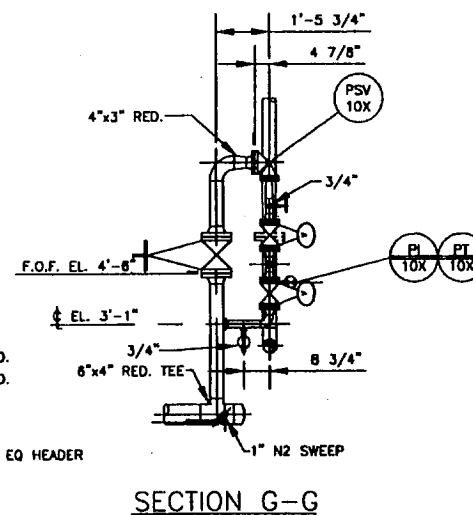
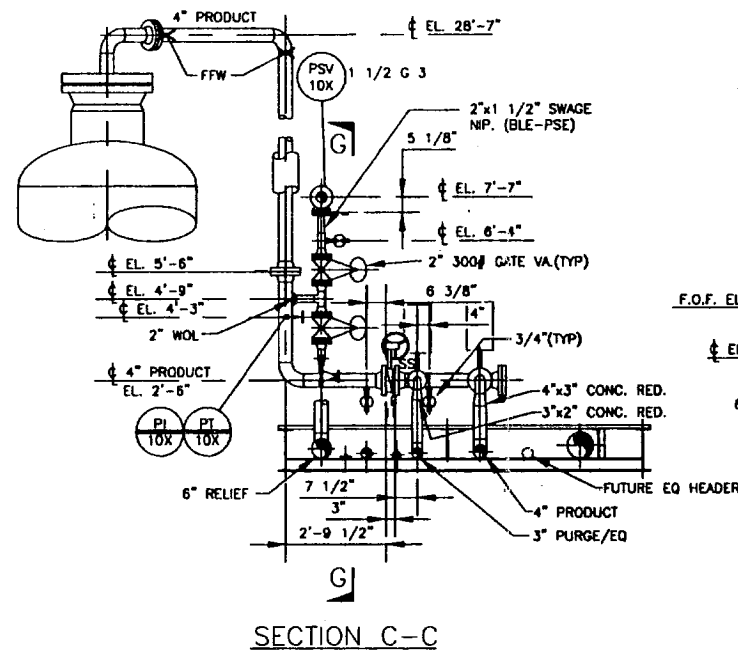
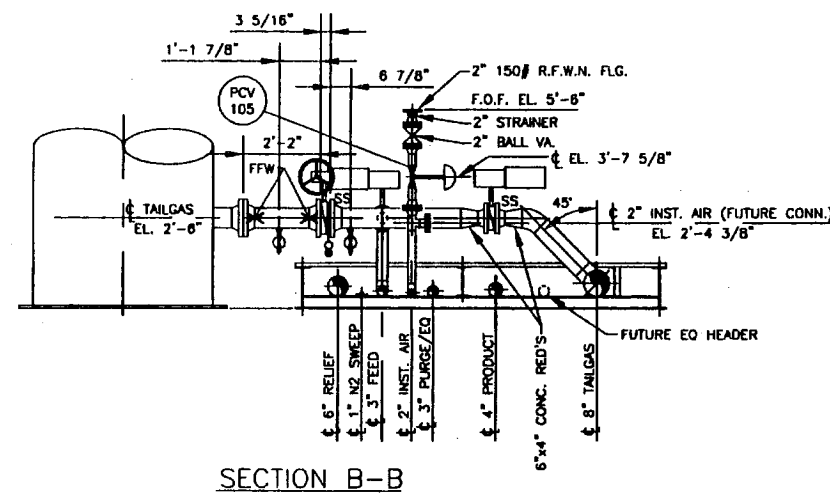
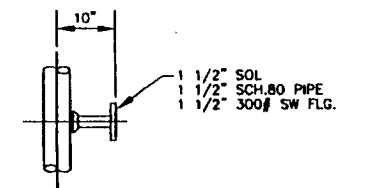
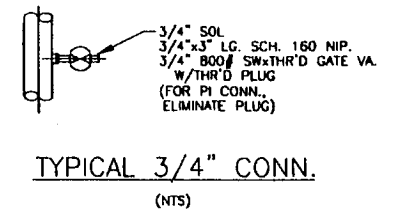
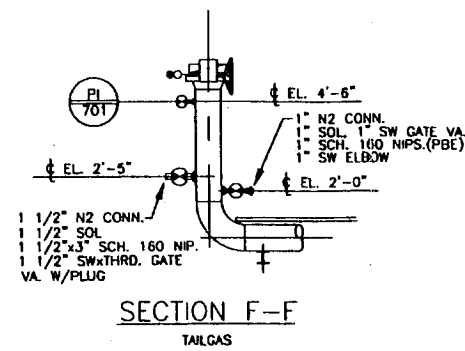
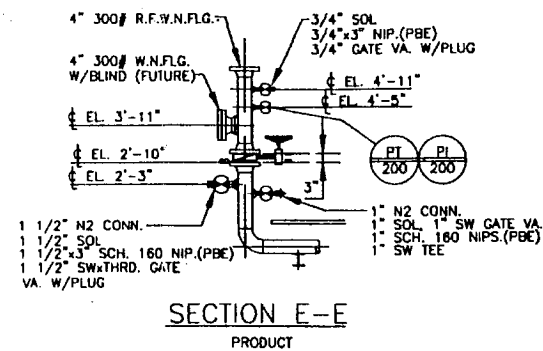
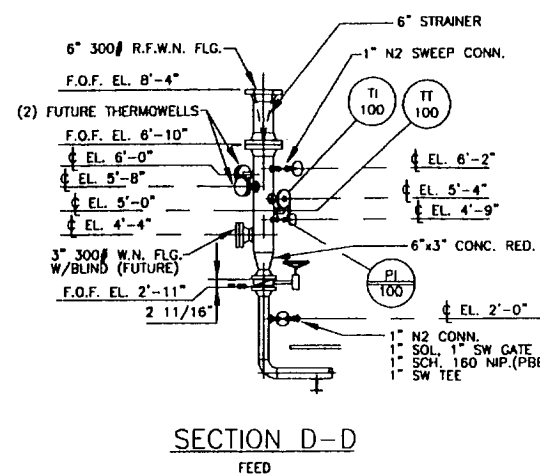
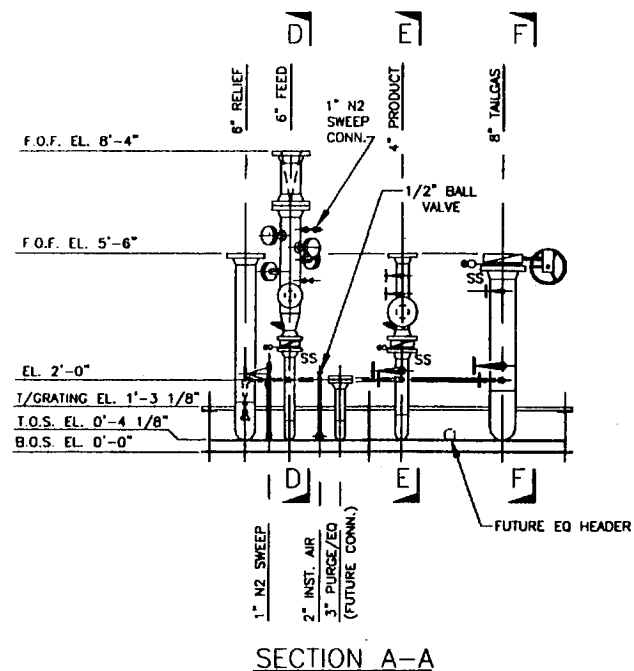
PIPING PLAN
BELOW GRATING

- GENERAL NOTES**
1. ALL GASKETS ARE 1/8" THICK.
 2. ALL ELEVATIONS ARE SET FROM BOTTOM OF SKID STEEL (B.O.S. EL. 0'-0").
 3. "U" DENOTES UNDER THE PLUG
"O" DENOTES OVER THE PLUG
"SS" DENOTES SHAFT SIDE
 4. X DENOTES FIELD FIT WELD, FABRICATOR TO PROVIDE 4" OVERLENGTH.
 5. EQUIPMENT TO BE GROUNDED BY CUSTOMER.
 6. DO NOT FIELD HYDROTEST SKID.
 7. FLGS. TO BE 300# EXCEPT AS NOTED.
 8. USE STUB-IN CONN'S FOR INST. AIR PIPING.

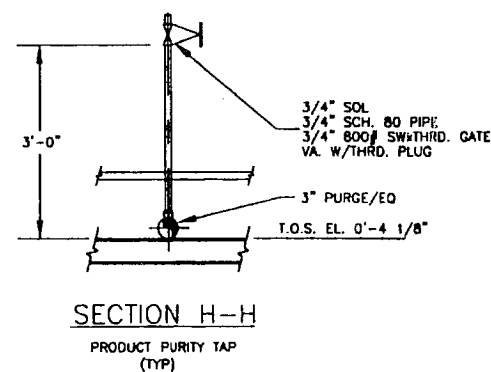
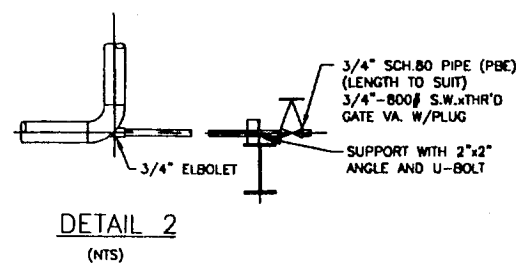
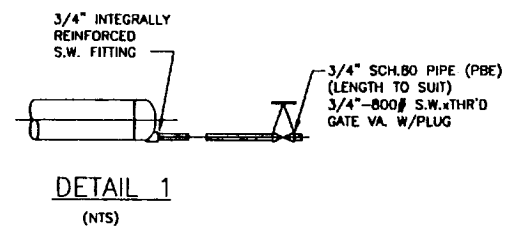
REFERENCE DRAWINGS & SPECS.

PIPING AND INSTR. DIAG.	1365-D-102
EQUIP. ARRANGEMENT (NLF)	1365-D-121
SKID STRUCTURAL BASE	1365-D-123
INSTRUMENT RACK	1365-D-125
CONDUIT ARRANGEMENT	1365-D-126
ANALOG & DIGITAL WIRING	1365-D-127
PROJECT SKID SPECIFICATIONS	1365-ES-201
STANDARD SKID SPECIFICATIONS	ES-201
STANDARD PIPE SUPPORT DETAILS	ES-202
STANDARD ELECTRICAL DESIGN & FABRICATION SPECIFICATION	ES-205

1	ISSUED FOR CONSTRUCTION	JDC	DMM	BJS	11/8/96				
0	ISSUED FOR BIDS	JDC	DMM	MW	10/30/96				
REV.	DESCRIPTION	DRAWN	ENL.	CHKD.	APPRD.	DATE			
<div style="text-align: center;"> CONFIDENTIAL THIS INFORMATION IS PROPRIETARY AND SHALL NOT BE DISCLOSED OUTSIDE YOUR ORGANIZATION, NOR SHALL IT BE DUPLICATED, USED, OR DISCLOSED FOR ANY PURPOSE OTHER THAN AS PERMITTED UNDER WRITTEN AGREEMENT WITH UOP. </div>									
		<div style="text-align: center;">  UOP POLYMERIZATION UNIT FORT SASKATCHEWAN, ALBERTA, CANADA </div>							
DRAWING TITLE:									
PIPING ARRANGEMENT-PLAN POLYBED® PSA UNIT PRAXAIR FORT SASKATCHEWAN, ALBERTA, CANADA									
SCALE:	3/8"=1'-0"	NO. FILE:	1365J001	UOP DRAWING NUMBER:	1365-D-122	SHEET NO.:	1 OF 2	REV.:	1

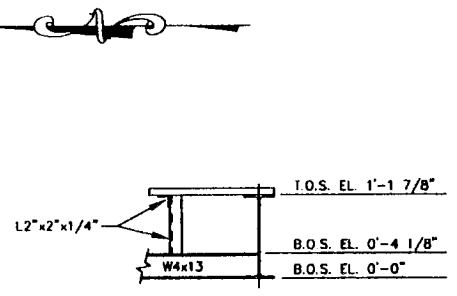


NOTE: INVERT EL OF SW FITTING TO EQUAL INVERT EL OF PIPE

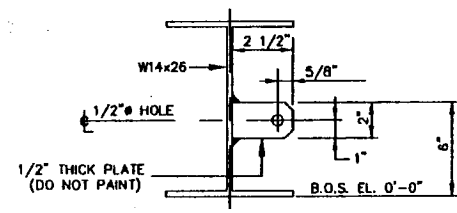


PRAXAIR
PROJECT #: 1000
P.O. #: 6896063
EQUIPMENT: TAG

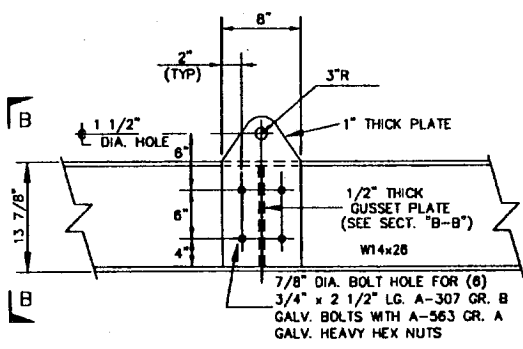
1	ISSUED FOR CONSTRUCTION	JDC	DMM	SLC	MA	11/8/14
0	ISSUED FOR BIDS	JDC	DMM	MA	MW	10/30/08
REV.	DESCRIPTION	DRWN	ENL	CHKD	APPLD	DATE
<p>CONFIDENTIAL</p> <p>THIS INFORMATION IS PROPRIETARY AND SHALL NOT BE DISCLOSED OUTSIDE YOUR ORGANIZATION, NOR SHALL IT BE DUPLICATED, USED, OR DISCLOSED FOR ANY PURPOSE OTHER THAN AS PERMITTED UNDER WRITTEN AGREEMENT WITH UOP.</p> <p>UOP</p> <p>DRIVING TITLE:</p> <p>PIPING ARRANGEMENT-SECTIONS AND DETAILS POLYBED® PSA UNIT PRAXAIR FORT SASKATCHEWAN, ALBERTA, CANADA</p>						
SCALE:	3/8"=1'-0"	CAD FILE:	1365J002	UOP DRAWING NUMBER:	1365-D-122	SHEET NO.:
						2 OF 2
						REV.:
						1



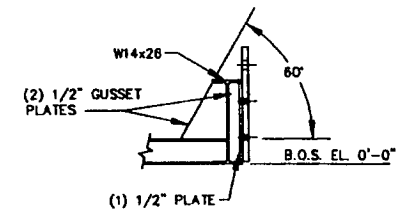
DETAIL 1
GRATING SUPPORT
(NTS)



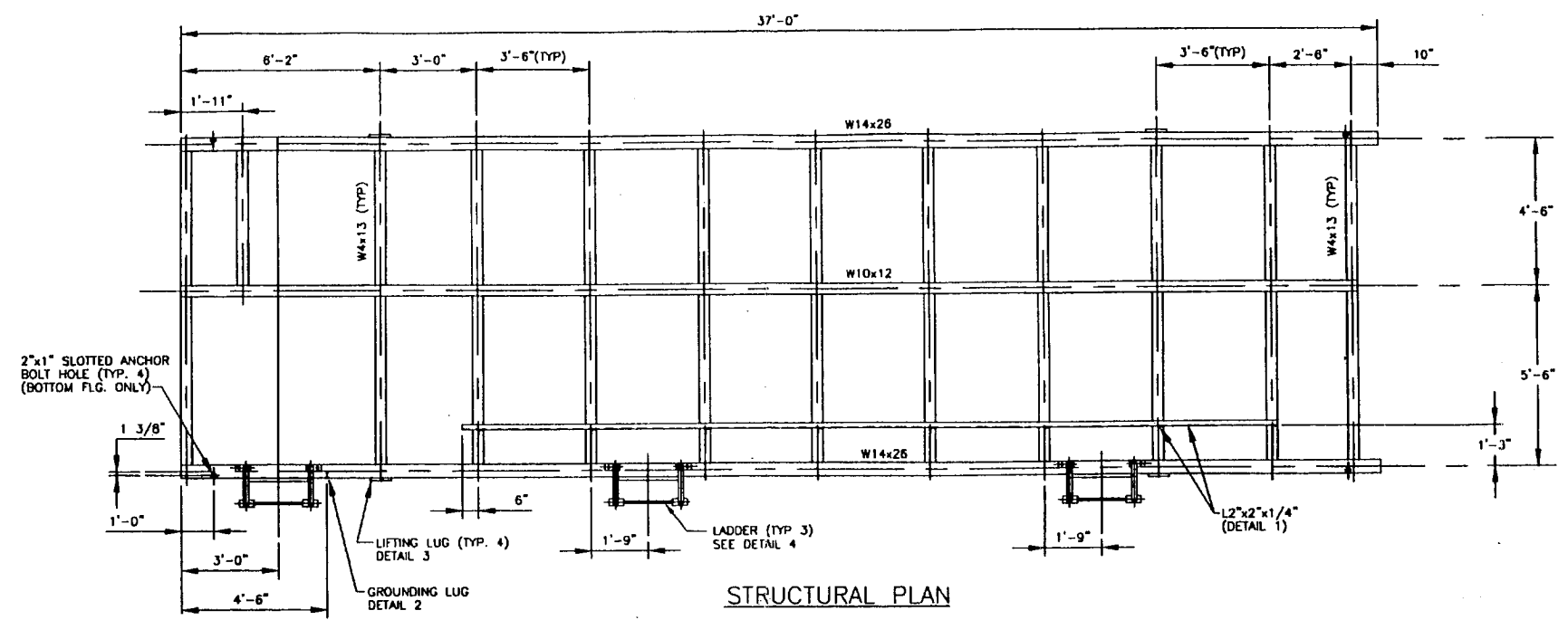
DETAIL 2
GROUNDING LUG
(NTS)



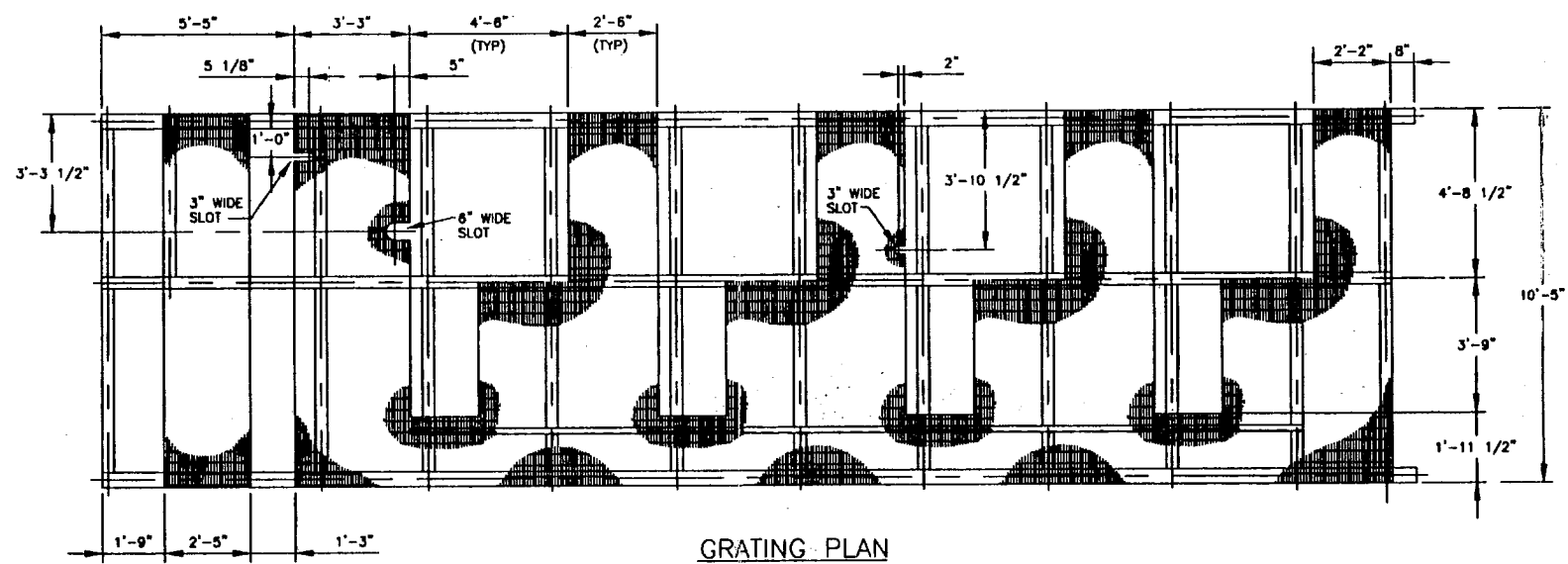
DETAIL 3
LIFTING LUG DETAIL
(TYP 4 PLACES)
(NTS)



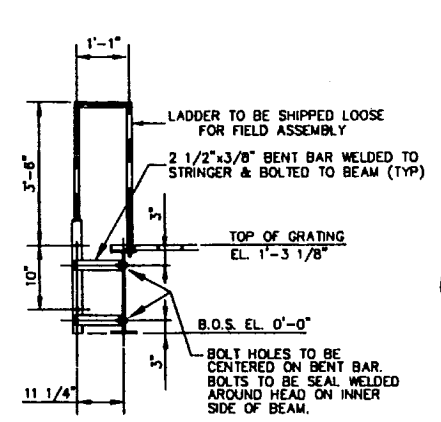
SECTION \"B-B\"
(NTS)



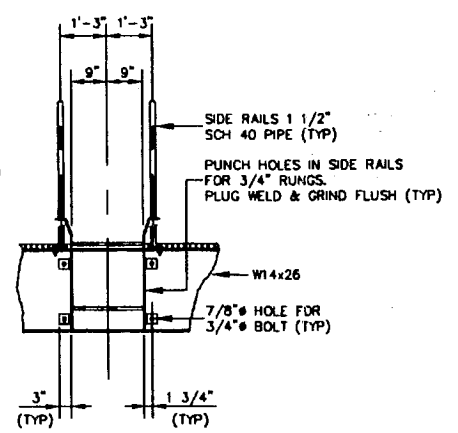
STRUCTURAL PLAN



GRATING PLAN



SIDE VIEW



FRONT VIEW


DETAIL 4
LADDER DETAIL
(TYP 3 PLACES)
(NTS)

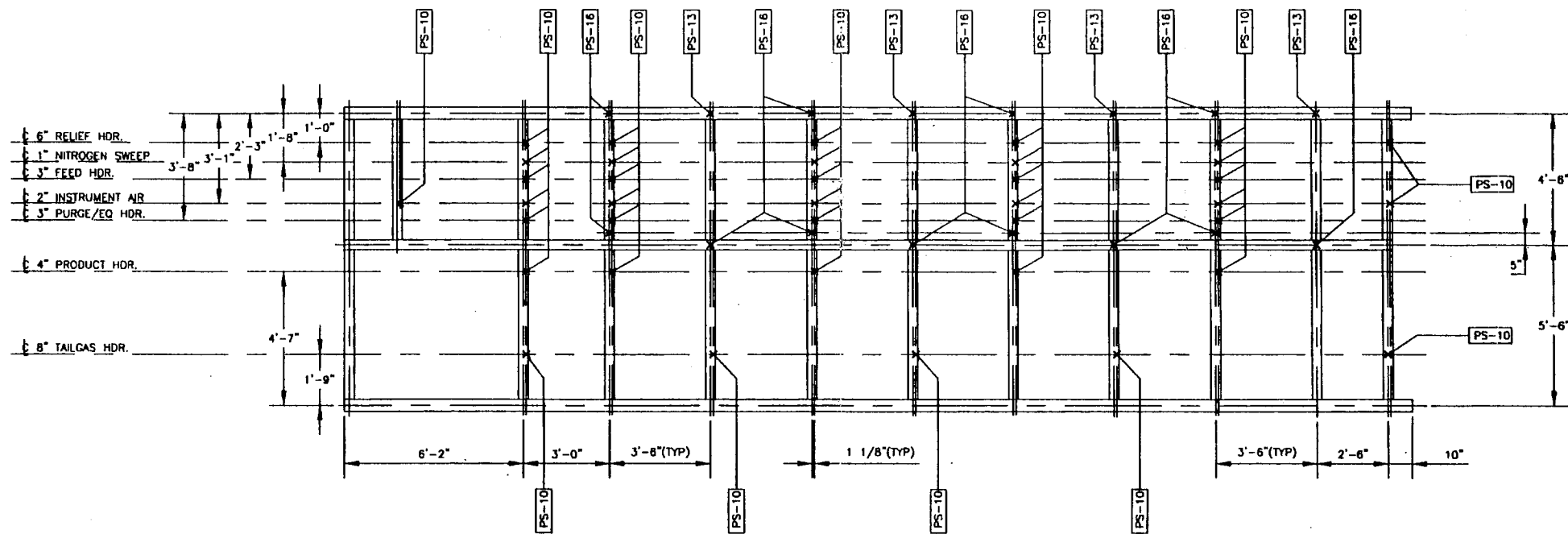
GENERAL NOTES

1. ALL ELEVATIONS ARE SET FROM BOTTOM OF SKID STEEL EL. 0'-0\".
2. USE SPREADER BARS WHEN LIFTING SKID.
3. ALL GRATING TO BE 1 1/4\" DEEP RECTANGULAR TYPE, WELDED WITH 3/16\" THICK BEARING BARS ON 1 3/16\" CENTERS & CROSS BARS ON 4\" CENTERS. GRATING TO BE 16G BORDEN TYPE WB/A OR EQ. GRATING TO BE INSTALLED IN REMOVABLE SECTIONS NO LARGER THAN 16 SQUARE FEET (APPROX.). GRATING TO BE ATTACHED WITH STEEL TYPE C-2 CLIPS. GRATING TO BE HOT DIP GALVANIZED.
4. FABRICATOR TO ROUTE ALL TUBING, CONDUIT, ETC THROUGH RECTANGULAR GRATING OPENINGS ONLY.
5. ALL TOE PLATE TO BE A MINIMUM OF 4\" x 1/4\" THICK GALVANIZED PLATE. TOE PLATE TO BE SECURELY ATTACHED & FULLY SURROUND ALL GRATING OPENINGS.
6. MACHINING OPERATIONS (DRILLING OF LIFTING LUGS, HOLES FOR LADDERS & HANDRAIL, PIPE SUPPORTS, ETC) SHALL BE COMPLETED PRIOR TO PAINTING OF BASE STRUCTURE.

REFERENCE DRAWINGS

PIPING ARRANGEMENT	1365-D-122
INSTRUMENT RACK	1365-D-125
SKID FABRICATION SPEC	1365-D-201
STANDARD SKID SPEC	ES-201
STANDARD PIPE SUPPORT DETAILS	ES-202

1	ISSUED FOR CONSTRUCTION	JDC	DMM	ELS	MW	11/8/96
0	ISSUED FOR BIDS	JDC	DMM		MW	10/30/95
REV.	DESCRIPTION	DRWN	ENG.	CHKD.	APP'D.	DATE
<p>CONFIDENTIAL</p> <p>THIS INFORMATION IS PROPRIETARY AND SHALL NOT BE DISCLOSED OUTSIDE YOUR ORGANIZATION, NOR SHALL IT BE DUPLICATED, USED, OR DISCLOSED FOR ANY PURPOSE OTHER THAN AS PERMITTED UNDER WRITTEN AGREEMENT WITH UOP.</p>		 <p>DR. ERIK ALBERTSON 888-690-6900 FAX 888-691-7238 PLANNED, ELLENOR 888-617-6817-6817-6817</p>				
<p>DRAWING TITLE: SKID STRUCTURAL BASE & GRATING PLAN POLYBED® PSA UNIT PRAXAIR FORT SASKATCHEWAN, ALBERTA, CANADA</p>						
<p>PROJECT #: 1058 P.O. #: 6896063 EQUIPMENT: TAG</p>						
SCALE:	3/8"=1'-0"	CAD FILE:	1365H001	UOP DRAWING NUMBER:	1365-D-123	SHEET NO.: 1 OF 2
				REV.:	1	

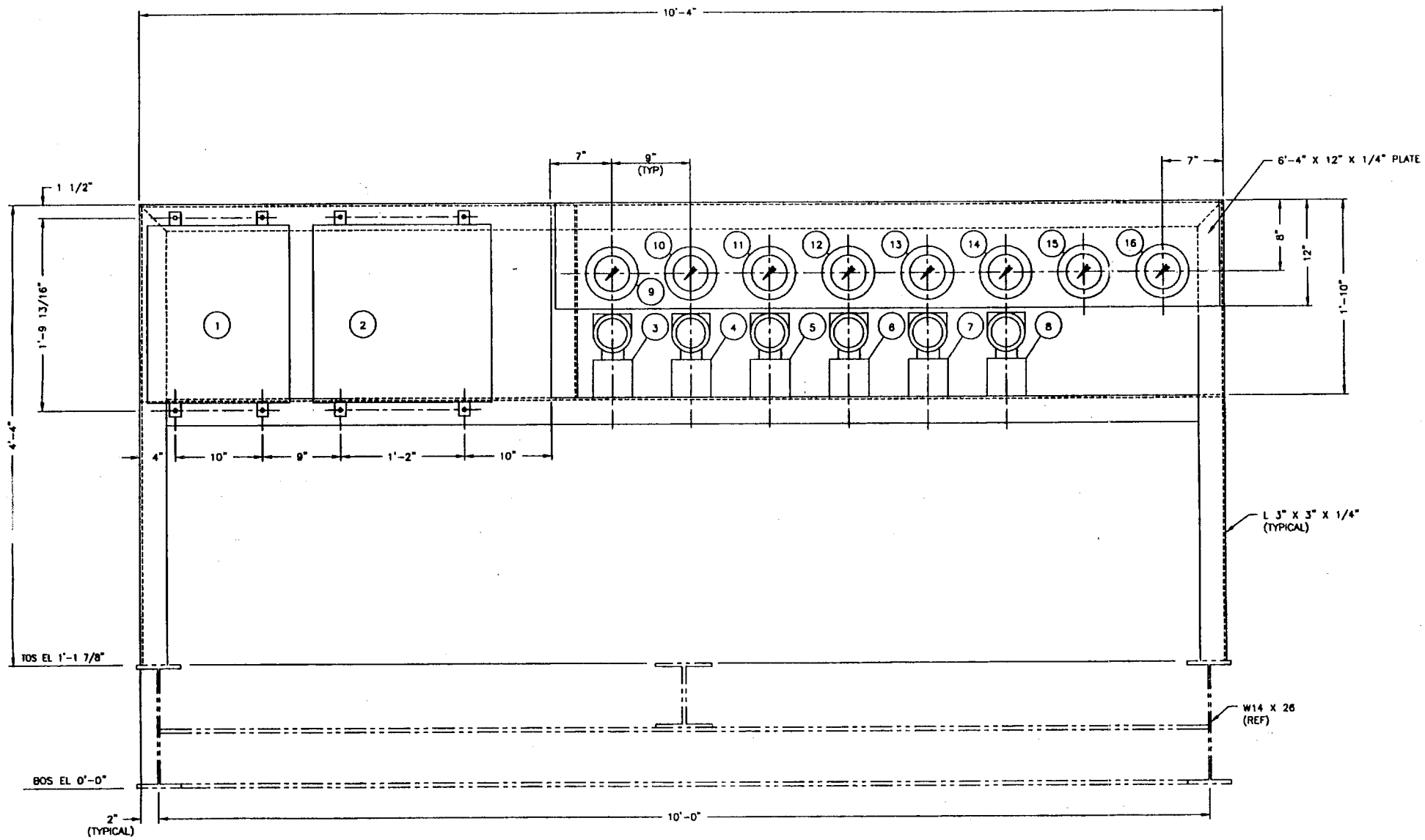


PIPE SUPPORT PLAN

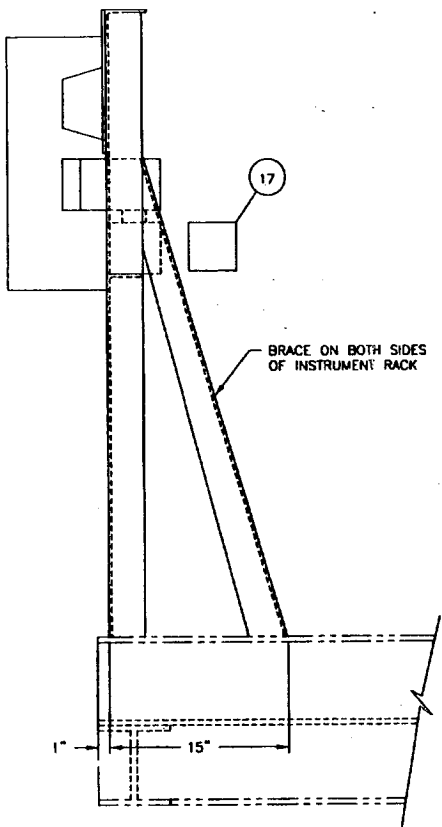
NOTE:
FOR GENERAL NOTES AND REFERENCE DWGS.
SEE DWG. 1365-D-123 SHT. 1

1	ISSUED FOR CONSTRUCTION	JDC	DMM	BK	11/8/96
0	ISSUED FOR BIDS	JDC	DMM	MW	10/30/96
REV.	DESCRIPTION	DRAWN	ENL.	CHECKED	APPROVED
<p>CONFIDENTIAL</p> <p>THIS INFORMATION IS PROPRIETARY AND SHALL NOT BE DISCLOSED OUTSIDE YOUR ORGANIZATION. NOR SHALL IT BE DUPLICATED, USED, OR DISCLOSED FOR ANY PURPOSE OTHER THAN AS PERMITTED UNDER WRITTEN AGREEMENT WITH UOP.</p> <p>uop</p> <p>PIPE SUPPORTS POLYBED® PSA UNIT PRAXAIR FORT SASKATCHEWAN, ALBERTA, CANADA</p>					
PROJECT #: 1088 P.O. #: 6896063 EQUIPMENT: TAG		SCALE: 3/8"=1'-0" CAD FILE: 1365H002		UOP DRAWING NUMBER: 1365-D-123 SHEET NO.: 2 OF 2 REV.: 1	

ITEM NO.	DESCRIPTION	TAG NO.
1	ELECTRICAL JUNCTION BOX	JB-1
2		JB-2
3	PRESSURE TRANSMITTER	PT-101
4		PT-102
5		PT-103
6		PT-104
7		PT-150
8		PT-200
9	PRESSURE INDICATOR GAUGE	PI-101
10		PI-102
11		PI-103
12		PI-104
13		PI-150
14		PI-200
15		PI-100
16		PI-701
17	4' X 4" X 48" WIREWAY	



FRONT VIEW LOOKING SOUTH



SIDE VIEW LOOKING EAST

NOTES:

1. INSTRUMENT TUBING, VALVES AND FITTINGS SHALL BE ROUTED BEHIND THE RACK BY FABRICATOR IN A MANNER WHICH PROVIDES ACCESSIBILITY FOR OPERATION AND MAINTENANCE. ALL TUBING AND VALVES SHALL BE FIRMLY SUPPORTED.
2. TAG NUMBERS SHALL BE FIXED TO STRUCTURE WITH DRIVE SCREWS (STAINLESS STEEL) ADJACENT TO CORRESPONDING INSTRUMENT.
3. A PROTECTIVE PLYWOOD COVER SHALL BE PROVIDED BY FABRICATOR FOR PROTECTION DURING SHIPMENT.
4. SKID FABRICATOR TO SUPPLY NUT, BOLTS, WASHERS, ETC. REQUIRED TO MOUNT INSTRUMENTS ON RACK. MATERIALS TO BE STAINLESS STEEL.
5. ALL STRUCTURAL MEMBERS AND PLATE SHALL BE SURFACE PREPARED AND PAINTED PER PROJECT SKID SPECIFICATION 1365-ES-201.
6. NAMEPLATES FOR ELECTRICAL JUNCTION BOXES (TWO REQUIRED) TO BE MACHINE ENGRAVED PHENOLIC WITH BLACK FIGURES ON WHITE BACKGROUND AND SHALL BE FIRMLY ATTACHED WITH SUITABLE EPOXY ADHESIVE. EXAMPLE: JB-1 24V DC DIGITAL.

1	ISSUED FOR CONSTRUCTION	TJM	DM	SL	11/8/96
0	ISSUED FOR BIDS	TJM	DM	TAJ	10/30/98
REV.	DESCRIPTION	DRAWN	ENG.	CHECKED	APPROVED
CONFIDENTIAL THIS INFORMATION IS PROPRIETARY AND SHALL NOT BE DISCLOSED OUTSIDE YOUR ORGANIZATION, NOR SHALL IT BE DUPLICATED, USED, OR DISCLOSED FOR ANY PURPOSE OTHER THAN AS PERMITTED UNDER WRITTEN AGREEMENT WITH UOP. UOP IN SHT ALUMINUM 8040-P6 OR 8017-P60 PLATES LARGE 80017-1017-100 DRAWING TITLE: INSTRUMENT RACK POLYBED® PSA UNIT PRAXAIR FORT SASKATCHEWAN, ALBERTA, CANADA					
PROJECT #:	1068	SCALE:	1 1/2"=1'-0"	OLD FILE:	1365F001
P.O. #:	6896063	UOP DRAWING NUMBER:	1365-D-125	SHEET NO.:	1 OF 1
EQUIPMENT:				REV.:	1
TAG					

PRAXAIR
PROJECT # 1068
P.O. # 6896063
EQUIPMENT TAG



GENERAL NOTES

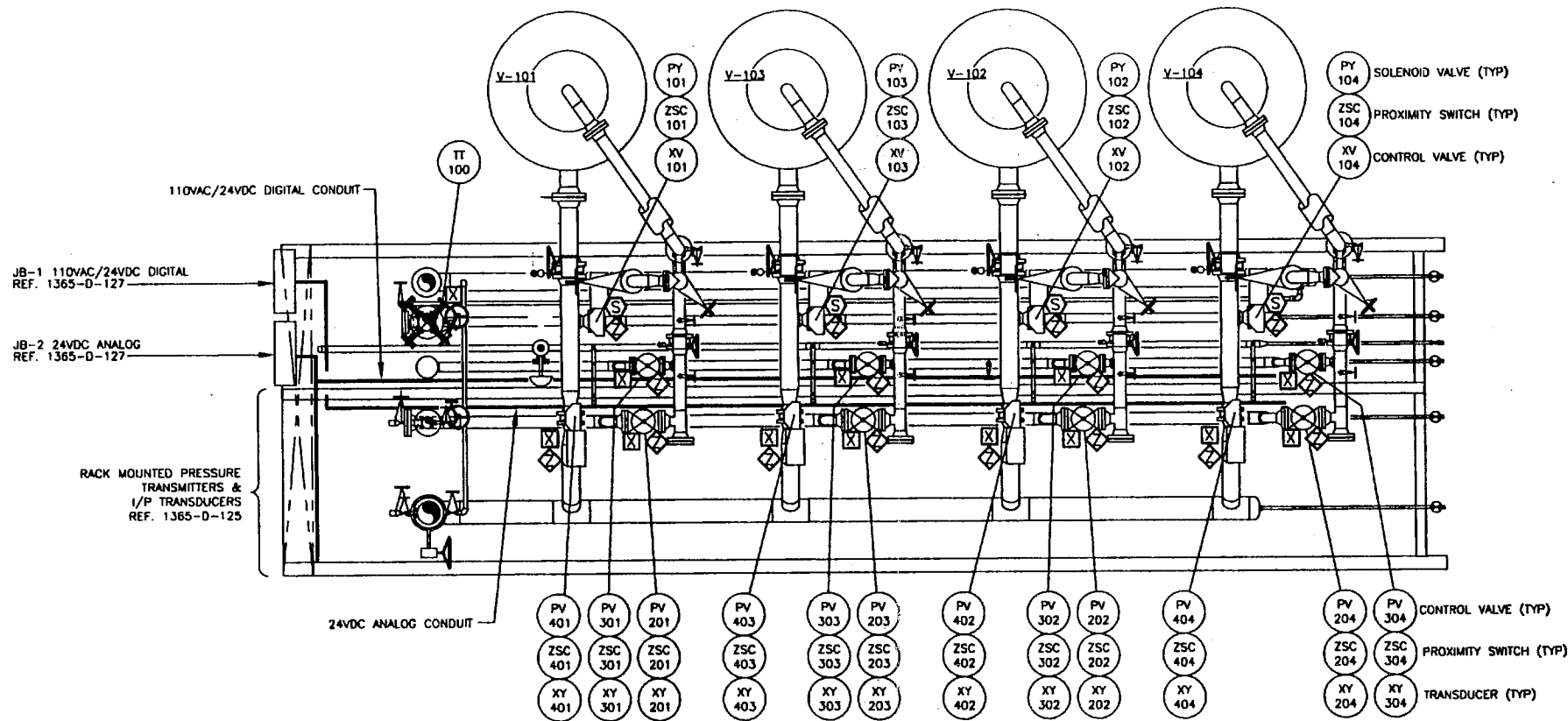
1. INDICATED ARE APPROXIMATE LOCATIONS OF CONDUIT. CHANGES MAY BE MADE UPON REVIEW WITH UOP.
2. MAIN CONDUIT RUNS SHALL BE ROUTED BELOW GRATING. CONDUIT ABOVE GRATING SHALL NOT BE ROUTED IN WALKWAYS OR TO CREATE A TRIPPING HAZARD.

REFERENCE DRAWINGS AND SPECIFICATIONS

PIPING AND INSTR. DIAG.	1365-D-102
EQUIP. ARRANGEMENT (NLF)	1365-D-121
PIPING ARRANGEMENT	1365-D-122
SKID STRUCTURAL BASE	1365-D-123
INSTRUMENT RACK	1365-D-125
PROJECT SKID SPECIFICATIONS	1385-ES-201
STANDARD SKID SPECIFICATIONS	ES-201
STANDARD PIPE SUPPORT DETAILS	ES-202
STANDARD ELECTRICAL DESIGN & FABRICATION SPECIFICATIONS	ES-205

LEGEND:

- ⊠ TRANSMITTER, TRANSDUCER
- ⊙ SOLENOID COIL
- ◇ LIMIT/PROXIMITY SWITCH



PLAN

PRAXAIR
PROJECT #: 1068
P.O. #: 6995063
EQUIPMENT:
TAG

ISSUED FOR CONSTRUCTION	JDC	DHH	EJS	11/8/11		
REV.	DESCRIPTION	DESIGN	ENCL	CHG'D	APPRO.	DATE
CONFIDENTIAL		uop				
THIS INFORMATION IS PROPRIETARY AND SHALL NOT BE DISCLOSED OUTSIDE YOUR ORGANIZATION, NOR SHALL IT BE DUPLICATED, USED, OR REPRODUCED FOR ANY PURPOSE OTHER THAN AS PERMITTED UNDER WRITTEN AGREEMENT WITH UOP.		IN CONF. AGREEMENT WITH UOP				
DRAWING TITLE:		CONDUIT ARRANGEMENT POLYBED® PSA UNIT PRAXAIR FORT SASKATCHEWAN, ALBERTA, CANADA				
SCALE:	CAD FILE:	UOP DRAWING NUMBER:	SHEET NO.:	REV.:		
3/8"=1'-0"	1365R001	1365-D-126	1 OF 1	0		